



# Instruction Manual



**6629821000**

# IMPORTANT SAFETY INSTRUCTIONS

## **WARNING - To reduce the risk of burns, fire, electric shock, or injury to persons:**

1. Read the instructions carefully before you use the machine.
2. Always disconnect or remove the power supply, including batteries, when changing needles or threading machines.
3. Never open the main motor case of the machine. The mechanism has been factory adjusted.
4. Always check the threading of the lock stitch before beginning to sew a seam. Improper threading or placement of the bobbin in the case will result in damage to the machine. Do not pull on the fabric as you sew. Pulling could break the needle and result in damage to the machine.
5. Remove batteries when the machine is not in use for long periods. This saves battery life and protects the machine. Keep extra batteries on hand so projects will not be interrupted when batteries need to be replaced.
6. Never leave the machine unattended with children or elderly people.
7. This appliance can be used by children aged from 8 years and above and persons with reduced physical, sensory, or mental capabilities or lack of experience and knowledge if they have been given supervision or instruction concerning use of the appliance in a safe way and understand the hazards involved.
8. Children should not play with the appliance.
9. Cleaning and user maintenance should not be carried out by children without supervision.
10. The sewing machine is an electrical appliance when used with an adapter (not included). Do not submerge the unit or any other parts in water. Do not operate the sewing machine with wet hands, without shoes, or while standing in water or on a wet surface when using the adapter (not included).
11. Do not change needles or thread machine while unit is on. Do not touch needles before you turn off the power.
12. Never use with a damaged power cord or plug. Keep the power cord away from heated surfaces.
13. Do not close the door on the cord or pull around sharp edges. This could cause the cord to become punctured or damaged and could result in injury.
14. Do not unplug by tugging on the cord. Grasp the plug with dry hands to remove the plug from the outlet.
15. Do not sew clothing while it is on your body.
16. Use only the power adapter recommended (sold separately) by the manufacturer. Any other adapter may cause injury or damage to the machine.
17. Never leave the sewing machine unattended while plugged in. Turn the switch off and unplug the cord when not in use.
18. The appliance is not to be used by persons (including children) with reduced physical, sensory, or mental capabilities, or lack of experience and knowledge, unless they have been given supervision or instruction.

**WARNING - To reduce the risk of burns, fire, electric shock, or injury to persons:**

1. Non-rechargeable batteries are not to be recharged.
2. Rechargeable batteries are to be removed from the appliance before being charged. Different types of batteries or new and used batteries are not to be mixed.
3. Batteries are to be inserted with the correct polarity.
4. Exhausted batteries are to be removed from the appliance and safely disposed of.
5. If the appliance is to be stored unused for a long period, the batteries should be removed. The supply terminals are not to be short-circuited.

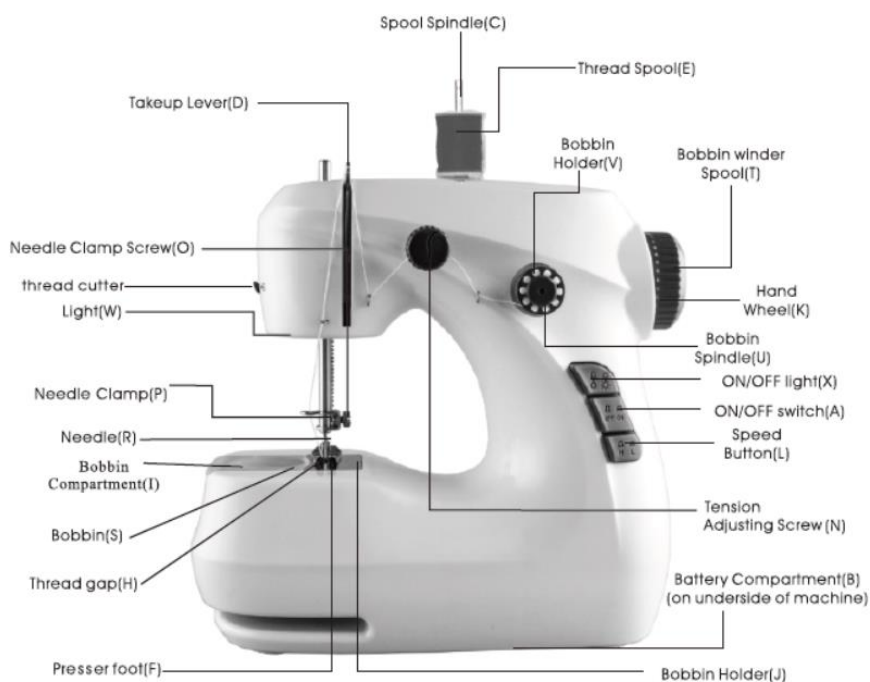
## Getting Started

As the owner of a new sewing machine, you will enjoy precision quality stitching on all types of fabrics, from multiple layers of denim to delicate silks.

Your sewing machine offers the ultimate in simplicity and ease of operation. For your safety and to fully enjoy the many advantages and ease of operation of your sewing machine, we recommend that you read all the important safeguards and care instructions in this instruction book.

We suggest that, before you start to use your sewing machine, you discover the many features and advantages by going through this guide, step by step, while seated at your sewing machine.

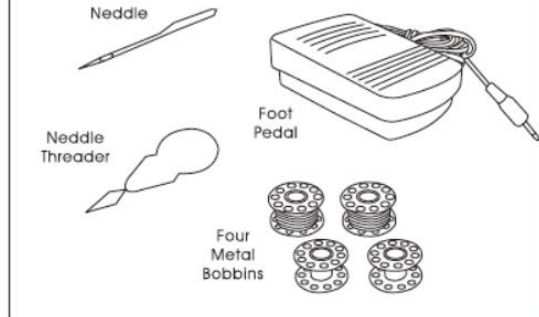
(Refer to illustrations for locations and configuration of components).



## MAIN UNIT (side view)

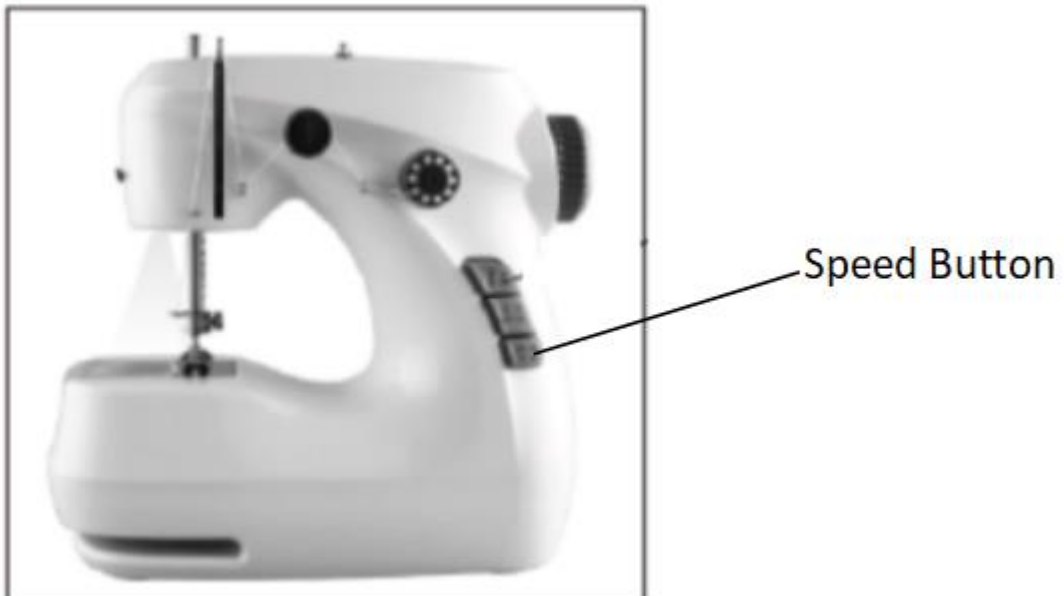


## ACCESSORIES



### Speed Button

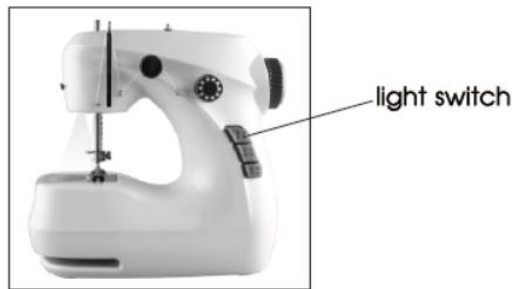
Select speed by pressing speed button (L) on face of machine. High speed, button is extended out. Low speed, button is in, flush with machine. Use low speed for intricate work, which requires a lot of stopping.



### Working lamp

If additional light is needed, press the light switch to turn the light “ON”.

Press the switch again to turn it “OFF”.



### Thread cutter

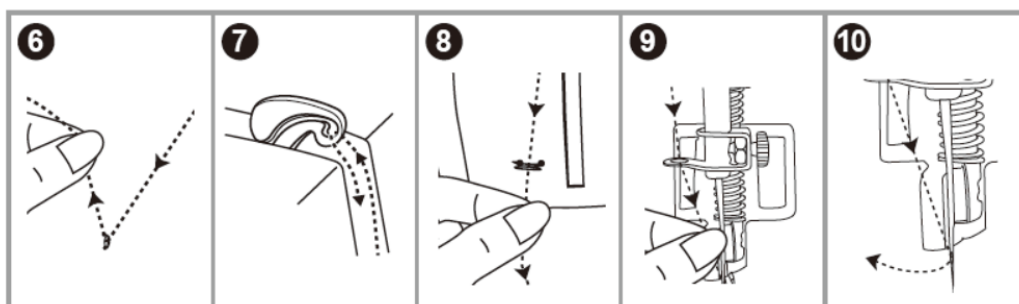
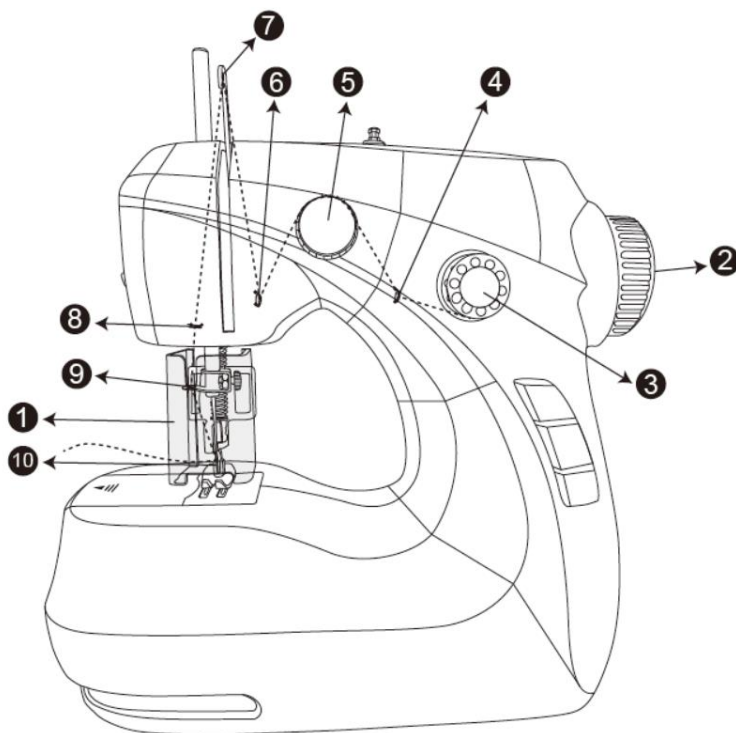
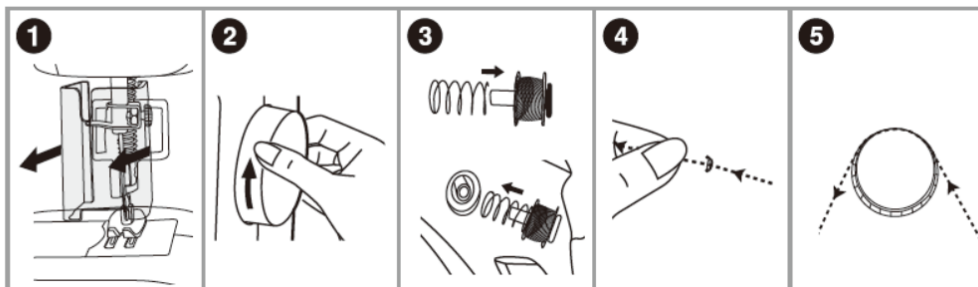
The machine has a thread cutter on the central left side of the machine. It can cut off the thread after sewing or winding thread.



## Threading the upper thread

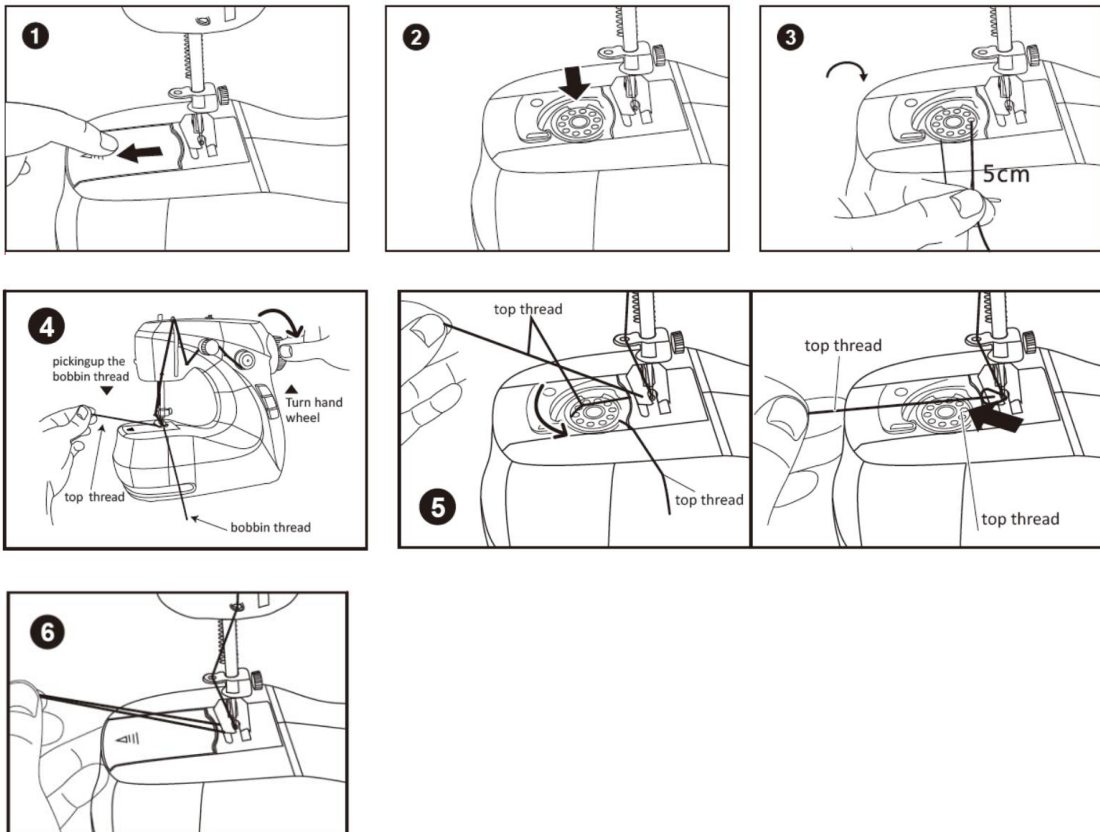
1. Remove the protective cap ①
2. Turn hand wheel (K) clockwise (towards you) ② until raising the needle to its highest point.
3. Pull the thread from the bobbin holder (V) through the first thread guide in the direction towards the front of machine ③ ④
4. Bring the thread across to the second thread guide ⑤ the thread goes over the tension adjusting screw (N) and must be positioned between the two washers behind the tension adjusting screw (N). This is what provides the lock stick tension to the thread.
5. Pull the thread from the tension adjusting screw (N) guide through the thread guide⑥ in the direction towards the front of machine.
6. Pull the thread through the thread guide ⑦ on the take-up lever (D), inserting in the direction towards the front of the machine.
7. Pull the thread down the thread guide ⑧ and insert the thread from the top downward.
8. Pull the thread downwards through the thread guide⑨ If necessary, lower the needle (R) to reach this thread guide by turning the hand wheel (K) slightly counter-clockwise (in the direction toward you) to lower the needle (R).

1. Insert the thread through eye ⑩ of the needle from the front towards the back of the machine. Use threader if necessary. If necessary, raise the needle (R) to reach the eye by turning the hand wheel (K) slightly clockwise (in the direction away from you).
2. Raise the presser foot (F) by lifting up on the lever at the rear of machine (G).
3. Pull about 10 inches of thread through the needle (R) and lay it on the deck under the presser foot (F), running in the direction away from you.



## BOTTOM BOBBIN PLACEMENT:

1. Remove the cover by lifting up where it has popped up at rear. ①
2. Place the bobbin with thread of your choice in the bobbin holder (J) Leaving about 10 inches of thread extended out from the bobbin holder (J) ②
3. Place the bobbin with thread of your choice in the bobbin holder(J), leaving about 5 inches of thread and put into the gap(H) ③
4. Turn the hand wheel (K) counterclockwise (towards you). The needle (R) will go down, picking up the bobbin thread. Turn the hand wheel (K) until the needle (R) has descended completely and then come up again to its highest raised point. Stop when the needle (R) starts to go down again ④
5. Raise the presser foot (F) and bring the spool thread around to the front. Pull it gently up and you will see it has caught the bobbin thread. Pull the two threads towards the rear (away from you) and lay them under the presser foot (F) ⑤
6. Snap the bobbin compartment (I) cover down and into place. ⑥



**Note: It is essential that threading both top and bottom is done properly. Check carefully and do one practice stitch before beginning to sew. Improper threading will damage the lock stitch.**

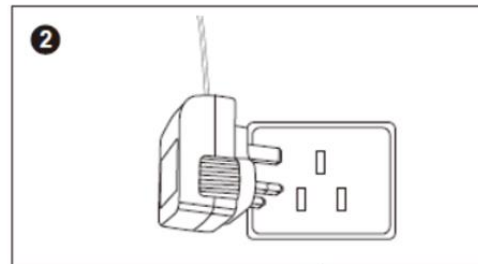
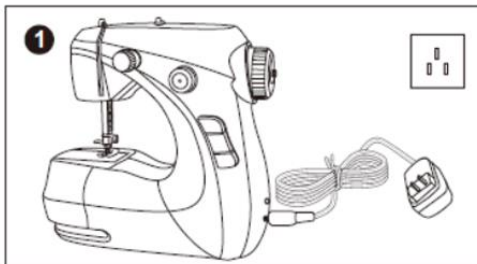
## Connecting machine to power source:

### Attention:

**Unplug power cord when machine is not in use.**

**Consult a qualified electrician if in doubt regarding how to connect the machine to power source.**

1. Connect the machine to a power source as illustrated ①
2. This appliance is equipped with a polarised plug, which must be used with the appropriate polarised outlet ②

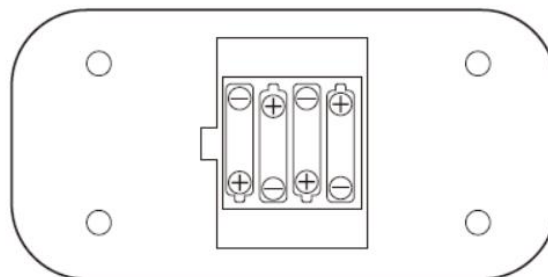


## IMPORTANT NOTICE

For an appliance with a polarised plug, one blade is wider than the other. To reduce the risk of electric shock, this plug is intended to fit in a polarized outlet only one way. If it does not fit fully in the outlet, reverse the plug. If it still does not fit, contact a qualified electrician to install the proper outlet. Do not modify the plug in any way.

## Installing the battery

1. Make certain that the on/off switch (A) is in the "off" position before inserting batteries.
2. Put four AA batteries into the battery compartment (B) on the underside of machine.
3. Push the switch (A) to turn on or off. In the "on" position, the switch is flush with machine. In the "off" position, the switch is extended out. The machine will start sewing immediately. Be sure the machine is properly threaded, and the fabric is positioned for sewing before you turn on the machine.
4. The battery should be removed when power adaptor is connected.

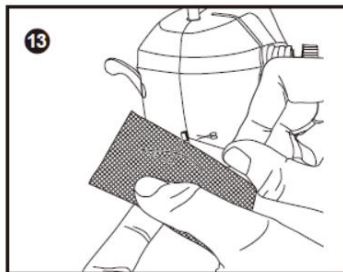
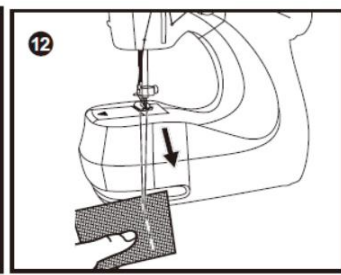
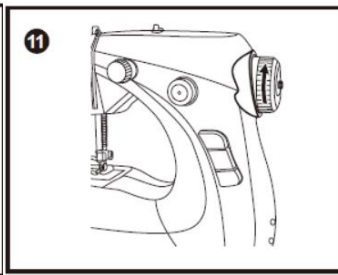
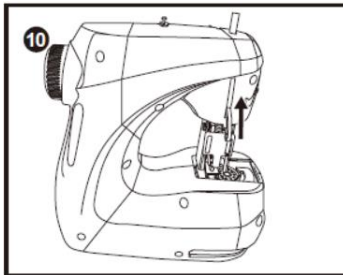
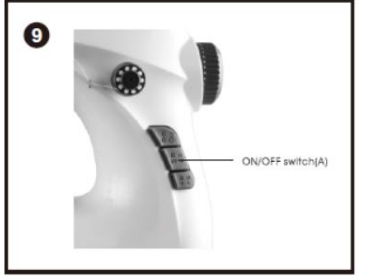
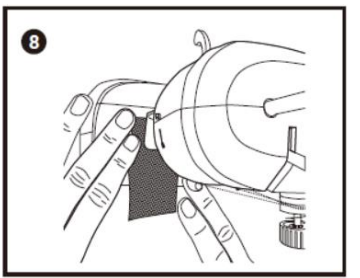
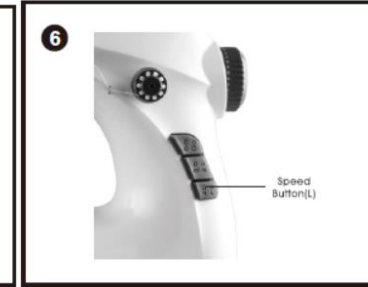
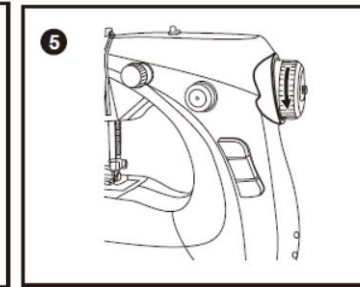
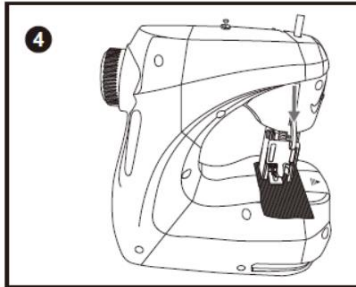
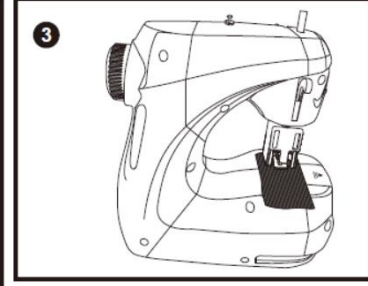
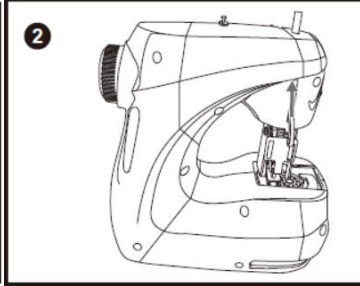
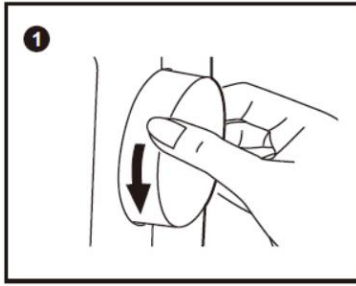




## **OPERATING THE MACHINE (without the foot pedal):**

### **Follow these simple steps:**

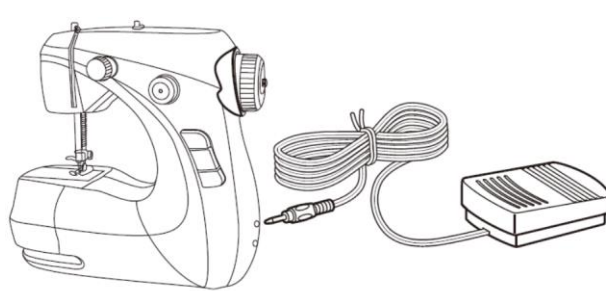
1. Lift the needle (R) above the presser foot (F) by turning the hand wheel (K) slightly in a clockwise direction (away from you) ①
2. Raise the presser foot (F) by lifting up on the presser foot lever (G) on the rear of the machine above the presser foot bar ②
3. Position the fabric to be sewn under the presser foot (F) with the presser foot (F) in a raised position. Make sure that the seam direction is towards you, aligned with the presser foot (F), with the seam location directly under the needle (R) ③
4. Lower the presser foot (F) by releasing the presser foot lever (G) downward n④
5. Rotate the hand wheel (K) in a clockwise direction two full turns to lock and start seam ⑤
6. Select speed by pressing speed button (L) on the face of machine. High speed, button is extended out. Low speed, button is in, flush with machine. Use low speed for intricate work which requires a lot of stopping, starting and turning fabric. Use high speed for long uninterrupted seams ⑥
7. Turn power switch (A) to "ON" position ⑦
8. Gently guide the fabric to keep the seam straight by pressing lightly down with your fingertips on both sides as it feeds through the presser foot (F) ⑧
9. When the seam is finished, turn switch (A) off ⑨
10. Raise presser foot (F) by lifting the presser foot lever (G) ⑩
11. Raise the needle (R) above the fabric by turning the hand wheel (K) slightly in a clockwise direction ⑪
12. Pull the fabric towards you leaving about 10 inches of thread between the fabric and the machine ⑫
13. Cut thread close to fabric, leaving excess thread loosely lying on the sewing deck in the direction of the presser foot (F) and towards you ⑬
14. Begin the next seam in the same manner as above by following operating steps above.



## TO USE THE FOOT PEDAL:

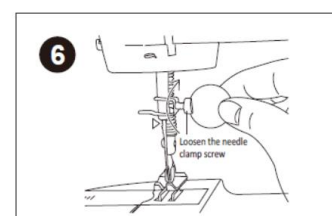
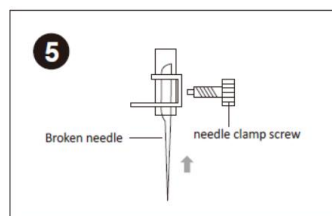
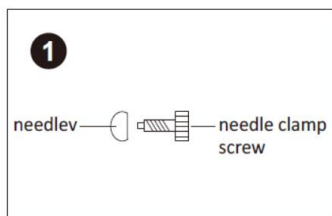
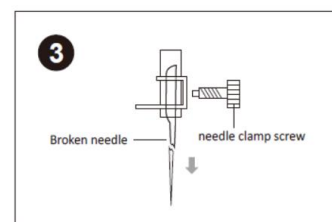
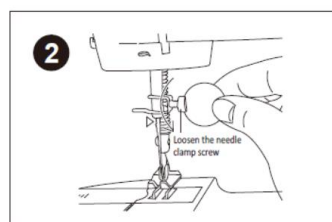
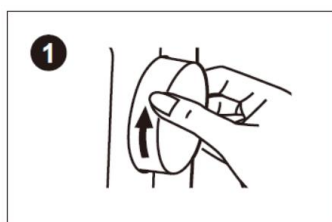
(Follow steps 1 - 14 on previous page with these exceptions)

1. Make sure the machine is in the "off" position.
2. Plug the foot pedal jack (M) into the back of machine.
3. Turn the machine on by pressing the foot pedal.
4. Press gently on the foot pedal to run the machine. When you are finished sewing a seam, ease your foot up and off of the foot pedal.



## CHANGING THE NEEDLE:

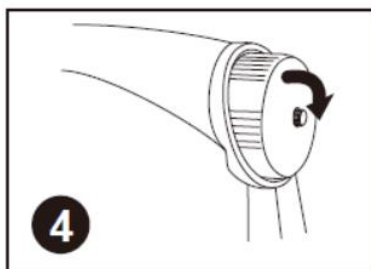
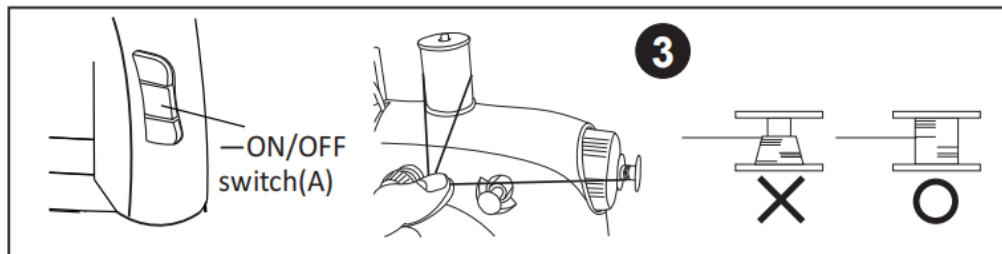
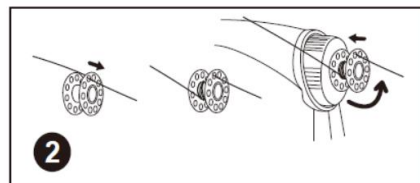
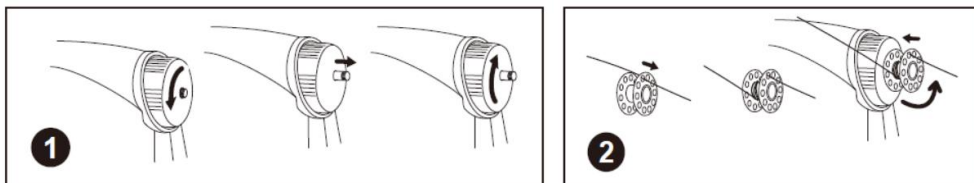
1. Turn the hand wheel (K) clockwise to raise the needle (R) to its highest position ①
2. Loosen the needle clamp screw (O) by turning it counterclockwise (towards you). You may need to use a short slotted screwdriver or small pliers ②
3. Remove the needle (R), pulling down, away from the needle clamp (P) ③
4. Place the new needle with the flat side facing in against the needle clamp (P) ④
5. Push it gently as far up as it will go and against the needle clamp (P) ⑤
6. Tighten the needle clamp screw (O) while holding the needle (R) in place ⑥



**Note: Needles come in various sizes designated by numbers. The smaller the number, the thinner the needle. Use smaller needles for more delicate fabrics and larger needles for heavier fabrics.**

## WINDING THE BOBBIN:

1. Always remove the bobbin (S) from the bobbin case on the machine before you wind a new bobbin.
2. Place the thread spool (E) on the thread spindle (C)
3. Put the bobbin pin into the hole on the hand wheel (k) and turn it slightly counterclockwise ①
4. Take an empty bobbin and in one hand pull the thread down from the thread spool (E) and thread the loose end through the small hole on the bobbin rim from the inside.
5. Leaving the loose end on the outside of the bobbin, wind the thread several turns around the inside of the bobbin
6. Place the bobbin on the bobbin pin, making certain that the thread is winding onto the bobbin in a counterclockwise direction. (This would mean the thread should be winding under the bobbin, not over it.) ②
7. Hold the thread lightly, guiding it gently through your thumb and index finger. Then turn on the switch(A) of the machine ③
8. When the bobbin is full, switch off the machine ④ Insert the bobbin into the bobbin case using the instructions for threading the machine.



## APPLICABLE CLOTH FOR SEWING

Sewing Presentation  Fabric Specification	Cloth	Cotton/Linen	Silk/Wool	Polyster	Elastic
	Regular		√	×	√
Thick		√	×	√	△
Thin		√	×	×	×
Hard		√	√	√	△
Soft		×	×	×	×

**Sewing effective:**

- √: means easy to sew
- ×: means difficult to sew
- △: means not smooth to sew

**Note:**

1. The definition of the fabric thickness:  
 Thin(fabric): two layers of the fabric thicknes<0.35mm;  
 Thick(fabric): two layers of the fabric thicknes>0.8mm;  
 Regular(fabric): two layers of the fabric thicknes ≥0.35mm and ≤0.8mm.

2. The definition of elastic cloth:  
 If the cloth, which size is"100mm\*30mm",is extending to or over 106mm under 0.5kg tension forse,  
 Then the cloth is defined elastic, otherwise it is inelastic.

3. Hard fabric: such as jeans, fine canvas, etc.

4. Soft fabric: such as towel, duster,etc.